

## HIGHLIGHTS OF PRESCRIBING INFORMATION

These highlights do not include all the information needed to use KRAZATI safely and effectively. See full prescribing information for KRAZATI.

**KRAZATI™ (adagrasib) tablets, for oral use**  
Initial U.S. Approval: 2022

### INDICATIONS AND USAGE

KRAZATI is an inhibitor of the RAS GTPase family indicated for the treatment of adult patients with *KRAS* G12C-mutated locally advanced or metastatic non-small cell lung cancer (NSCLC), as determined by an FDA approved test, who have received at least one prior systemic therapy. (1)

This indication is approved under accelerated approval based on objective response rate (ORR) and duration of response (DOR). Continued approval for this indication may be contingent upon verification and description of a clinical benefit in a confirmatory trial(s). (1)

### DOSAGE AND ADMINISTRATION

- Recommended dosage: 600 mg orally twice daily. (2.2)
- Swallow tablets whole with or without food. (2.2)

### DOSAGE FORMS AND STRENGTHS

Tablets: 200 mg. (3)

### CONTRAINDICATIONS

None. (4)

### WARNINGS AND PRECAUTIONS

- Gastrointestinal Adverse Reactions:** Monitor patients for diarrhea, nausea and vomiting and provide supportive care as needed. Withhold, reduce the dose or permanently discontinue based on severity. (2.3, 5.1)
- QTc Interval Prolongation:** Avoid concomitant use of KRAZATI with other products with a known potential to prolong the QTc interval. Monitor ECG and electrolytes in patients at risk, and in patients taking medications known to prolong the QT interval. Withhold, reduce the dose, or permanently discontinue based on severity. (2.3, 5.2)
- Hepatotoxicity:** Monitor liver laboratory tests prior to the start of KRAZATI and monthly for 3 months after and as clinically indicated. Reduce the dose, withhold, or permanently discontinue based on severity. (2.3, 5.3)

- Interstitial Lung Disease / Pneumonitis:** Monitor for new or worsening respiratory symptoms. Withhold KRAZATI for suspected ILD/pneumonitis and permanently discontinue if no other potential causes of ILD/pneumonitis are identified. (2.3, 5.4)

### ADVERSE REACTIONS

- The most common ( $\geq 25\%$ ) adverse reactions were nausea, diarrhea, vomiting, fatigue, musculoskeletal pain, hepatotoxicity, renal impairment, edema, dyspnea, and decreased appetite. (6.1)
- The most common Grade 3 or 4 ( $\geq 2\%$ ) laboratory abnormalities were decreased lymphocytes, decreased hemoglobin, increased alanine aminotransferase, increased aspartate aminotransferase, hypokalemia, hyponatremia, increased lipase, decreased leukocytes, decreased neutrophils and increased alkaline phosphatase. (6.1)

To report SUSPECTED ADVERSE REACTIONS, contact Mirati Therapeutics, Inc. at 1-844-MIRATI-1 (1-844-647-2841) or FDA at 1-800-FDA-1088 or www.fda.gov/medwatch.

### DRUG INTERACTIONS

See full prescribing information for clinically significant drug interactions with KRAZATI. (7)

- Strong CYP3A4 Inducers:** Avoid concomitant use. (7.1)
- Strong CYP3A4 Inhibitors:** Avoid concomitant use until adagrasib concentrations have reached steady state. (7.1)
- Sensitive CYP3A4 Substrates:** Avoid concomitant use with sensitive CYP3A4 substrates. (7.2)
- Sensitive CYP2C9 or CYP2D6 Substrates or P-gp Substrates:** Avoid concomitant use with sensitive CYP2C9 or CYP2D6 substrates or P-gp substrates where minimal concentration changes may lead to serious adverse reactions. (7.2)
- Drugs That Prolong QT Interval:** Avoid concomitant use with KRAZATI. (7.3)

### USE IN SPECIFIC POPULATIONS

**Lactation:** Advise not to breastfeed. (8.2)

See 17 for PATIENT COUNSELING INFORMATION and FDA-approved patient labeling.

Revised: 12/2022

## FULL PRESCRIBING INFORMATION: CONTENTS\*

1	INDICATIONS AND USAGE	8.2	Lactation
2	DOSAGE AND ADMINISTRATION	8.3	Females and Males of Reproductive Potential
2.1	Patient Selection	8.4	Pediatric Use
2.2	Recommended Dosage	8.5	Geriatric Use
2.3	Dosage Modifications for Adverse Reactions	11	DESCRIPTION
3	DOSAGE FORMS AND STRENGTHS	12	CLINICAL PHARMACOLOGY
4	CONTRAINDICATIONS	12.1	Mechanism of Action
5	WARNINGS AND PRECAUTIONS	12.2	Pharmacodynamics
5.1	Gastrointestinal Adverse Reactions	12.3	Pharmacokinetics
5.2	QTc Interval Prolongation	13	NONCLINICAL TOXICOLOGY
5.3	Hepatotoxicity	13.1	Carcinogenesis, Mutagenesis, Impairment of Fertility
5.4	Interstitial Lung Disease /Pneumonitis	13.2	Animal Toxicology and/or Pharmacology
6	ADVERSE REACTIONS	14	CLINICAL STUDIES
6.1	Clinical Trials Experience	16	HOW SUPPLIED/STORAGE AND HANDLING
7	DRUG INTERACTIONS	17	PATIENT COUNSELING INFORMATION
7.1	Effects of Other Drugs on KRAZATI		
7.2	Effects of KRAZATI on Other Drugs		
7.3	Drugs That Prolong QTc Interval		
8	USE IN SPECIFIC POPULATIONS		
8.1	Pregnancy		

\*Sections or subsections omitted from the full prescribing information are not listed.

## FULL PRESCRIBING INFORMATION

### 1 INDICATIONS AND USAGE

KRAZATI is indicated for the treatment of adult patients with *KRAS* G12C-mutated locally advanced or metastatic non-small cell lung cancer (NSCLC), as determined by an FDA-approved test [see *Dosage and Administration (2.1)*], who have received at least one prior systemic therapy.

This indication is approved under accelerated approval based on objective response rate (ORR) and duration of response (DOR) [see *Clinical Studies (14)*]. Continued approval for this indication may be contingent upon verification and description of a clinical benefit in a confirmatory trial(s).

### 2 DOSAGE AND ADMINISTRATION

#### 2.1 Patient Selection

Select patients for treatment of locally advanced or metastatic NSCLC with KRAZATI based on the presence of *KRAS* G12C mutation in plasma or tumor specimens [see *Clinical Studies (14)*]. If no mutation is detected in a plasma specimen, test tumor tissue.

Information on FDA-approved tests for the detection of a *KRAS* G12C mutation is available at: <https://www.fda.gov/CompanionDiagnostics>

#### 2.2 Recommended Dosage

The recommended dosage of KRAZATI is 600 mg orally twice daily until disease progression or unacceptable toxicity.

Take KRAZATI at the same time every day with or without food [see *Clinical Pharmacology (12.3)*]. Swallow tablets whole. Do not chew, crush or split tablets.

If vomiting occurs after taking KRAZATI, do not take an additional dose. Resume dosing at the next scheduled time.

If a dose is inadvertently missed, it should be skipped if greater than 4 hours have elapsed from the expected dosing time. Resume dosing at the next scheduled time.

#### 2.3 Dosage Modifications for Adverse Reactions

Recommended dose reductions for adverse reactions are outlined in [Table 1](#). If adverse reactions occur, a maximum of two dose reductions are permitted. Permanently discontinue KRAZATI in patients who are unable to tolerate 600 mg once daily.

**Table 1: Recommended KRAZATI Dosage Reductions for Adverse Reactions**

Dose Reduction	Dosage
First dose reduction	400 mg twice daily
Second dose reduction	600 mg once daily

The recommended dosage modifications for adverse reactions are provided in [Table 2](#).

**Table 2: Recommended KRAZATI Dosage Modifications for Adverse Reactions**

Adverse reaction	Severity <sup>a</sup>	Dosage Modification
Nausea or vomiting despite appropriate supportive care (including anti-emetic therapy) <i>[see Warnings and Precautions (5.1)]</i>	Grade 3 or 4	<ul style="list-style-type: none"> <li>Withhold KRAZATI until recovery to <math>\leq</math> Grade 1 or return to baseline.</li> <li>Resume KRAZATI at the next lower dose level.</li> </ul>
Diarrhea despite appropriate supportive care (including anti-diarrheal therapy) <i>[see Warnings and Precautions (5.1)]</i>	Grade 3 or 4	<ul style="list-style-type: none"> <li>Withhold KRAZATI until recovery to <math>\leq</math> Grade 1 or return to baseline.</li> <li>Resume KRAZATI at the next lower dose level.</li> </ul>
QTc Interval Prolongation <i>[see Warnings and Precautions (5.2)]</i>	QTc absolute value greater than 500 ms or Greater than an increase of 60 ms from baseline	<ul style="list-style-type: none"> <li>Withhold KRAZATI until QTc interval less than 481 ms or return to baseline.</li> <li>Resume KRAZATI at the next lower dose level.</li> </ul>
	Torsade de pointes, polymorphic ventricular tachycardia or signs or symptoms of serious or life-threatening arrhythmia	<ul style="list-style-type: none"> <li>Permanently discontinue KRAZATI.</li> </ul>
Hepatotoxicity <i>[see Warnings and Precautions (5.3)]</i>	Grade 2 AST or ALT	<ul style="list-style-type: none"> <li>Decrease KRAZATI to the next lower dose level.</li> </ul>
	Grade 3 or 4 AST or ALT	<ul style="list-style-type: none"> <li>Withhold KRAZATI until recovery to <math>\leq</math> Grade 1 or return to baseline.</li> <li>Resume KRAZATI at the next lower dose level.</li> </ul>
	AST or ALT $> 3 \times$ ULN with total bilirubin $> 2 \times$ ULN in the absence of alternative causes	<ul style="list-style-type: none"> <li>Permanently discontinue KRAZATI.</li> </ul>

Adverse reaction	Severity <sup>a</sup>	Dosage Modification
Interstitial Lung Disease / Pneumonitis <i>[see Warnings and Precautions (5.4)]</i>	Any Grade	<ul style="list-style-type: none"> <li>• Withhold KRAZATI if ILD/pneumonitis is suspected.</li> <li>• Permanently discontinue KRAZATI if ILD/pneumonitis is confirmed.</li> </ul>
Other Adverse Reactions <i>[see Adverse Reactions (6.1)]</i>	Grade 3 or 4	<ul style="list-style-type: none"> <li>• Withhold KRAZATI until <math>\leq</math> Grade 1 or return to baseline.</li> <li>• Resume KRAZATI at the next lower dose level.</li> </ul>

ALT = alanine aminotransferase; AST = aspartate aminotransferase; ULN = upper limit of normal

<sup>a</sup> Grading defined by National Cancer Institute Common Terminology Criteria for Adverse Events (NCI CTCAE) version 5.0

### 3 DOSAGE FORMS AND STRENGTHS

Tablets: 200 mg, oval shaped, white to off-white, immediate release film coated tablets with “200” on one side and stylized “M” on the opposite side.

### 4 CONTRAINDICATIONS

None.

### 5 WARNINGS AND PRECAUTIONS

#### 5.1 Gastrointestinal Adverse Reactions

KRAZATI can cause severe gastrointestinal adverse reactions.

In the pooled safety population *[see Adverse Reactions (6.1)]*, serious gastrointestinal adverse reactions observed were gastrointestinal bleeding in 3.8% including 0.8% Grade 3 or 4, gastrointestinal obstruction in 1.6% including 1.4% Grade 3 or 4, colitis in 0.5% including 0.3% Grade 3, ileus in 0.5%, and stenosis in 0.3%. In addition, nausea, diarrhea, or vomiting occurred in 89% of 366 patients, including 9% Grade 3. Nausea, diarrhea, or vomiting led to dosage interruption or dose reduction in 29% of patients and permanent discontinuation of adagrasib in 0.3%.

Monitor and manage patients using supportive care, including antidiarrheals, antiemetics, or fluid replacement, as indicated. Withhold, reduce the dose, or permanently discontinue KRAZATI based on severity [see *Dosage and Administration (2.3)*].

## 5.2 QTc Interval Prolongation

KRAZATI can cause QTc interval prolongation, which can increase the risk for ventricular tachyarrhythmias (e.g., torsades de pointes) or sudden death.

In the pooled safety population [see *Adverse Reactions (6.1)*], 6% of 366 patients with at least one post-baseline electrocardiogram (ECG) assessment had an average QTc  $\geq$  501 ms and 11% of patients had an increase from baseline of QTc > 60 msec. KRAZATI causes concentration-dependent increases in the QTc interval [see *Clinical Pharmacology (12.2)*].

Avoid concomitant use of KRAZATI with other products with a known potential to prolong the QTc interval. [see *Drug Interactions (7.3)* and *Clinical Pharmacology (12.2)*]. Avoid use of KRAZATI in patients with congenital long QT syndrome and in patients with concurrent QTc prolongation.

Monitor ECGs and electrolytes prior to starting KRAZATI, during concomitant use, and as clinically indicated in patients with congestive heart failure, bradyarrhythmias, electrolyte abnormalities, and in patients who are unable to avoid concomitant medications that are known to prolong the QT interval. Withhold, reduce the dose, or permanently discontinue KRAZATI depending on severity [see *Dosage and Administration (2.3)*].

## 5.3 Hepatotoxicity

KRAZATI can cause hepatotoxicity, which may lead to drug-induced liver injury and hepatitis.

In the pooled safety population of 366 patients [see *Adverse Reactions (6.1)*], drug-induced liver injury was reported in 0.3% of patients, including 0.3% Grade 3. A total of 32% of patients who received adagrasib had increased alanine aminotransferase (ALT)/increased aspartate aminotransferase (AST); 5% were Grade 3 and 0.5% were Grade 4. The median time to first onset of increased ALT/AST was 3 weeks (range: 0.1 to 48). Overall hepatotoxicity occurred in 37%, and 7% were Grade 3 or 4. Hepatotoxicity leading to dose interruption or reduction occurred in 12% of patients. Adagrasib was discontinued due to hepatotoxicity in 0.5% of patients.

Monitor liver laboratory tests (AST, ALT, alkaline phosphatase and total bilirubin) prior to the start of KRAZATI and monthly for 3 months or as clinically indicated, with more frequent testing in patients who develop transaminase elevations. Reduce the dose, withhold, or permanently discontinue KRAZATI based on severity [see *Dosage and Administration (2.3)* and *Adverse Reactions (6.1)*].

## 5.4 Interstitial Lung Disease /Pneumonitis

KRAZATI can cause interstitial lung disease (ILD)/pneumonitis, which can be fatal.

In the pooled safety population [see *Adverse Reactions (6.1)*], ILD/pneumonitis occurred in 4.1% of patients, 1.4% were Grade 3 or 4, and one case was fatal. The median time to first onset for ILD/pneumonitis was 12 weeks (range: 5 to 31 weeks). Adagrasib was discontinued due to ILD/pneumonitis in 0.8% of patients.

Monitor patients for new or worsening respiratory symptoms indicative of ILD/pneumonitis (e.g., dyspnea, cough, fever) during treatment with KRAZATI. Withhold KRAZATI in patients with suspected ILD/pneumonitis and permanently discontinue KRAZATI if no other potential causes of ILD/pneumonitis are identified [see *Dosage and Administration (2.3)*].

## 6 ADVERSE REACTIONS

The following clinically significant adverse reactions are described elsewhere in the labeling:

- Gastrointestinal Adverse Reactions [see *Warnings and Precautions (5.1)*]
- QTc Interval Prolongation [see *Warnings and Precautions (5.2)*]
- Hepatotoxicity [see *Warnings and Precautions (5.3)*]
- Interstitial Lung Disease (ILD)/Pneumonitis [see *Warnings and Precautions (5.4)*]

### 6.1 Clinical Trials Experience

Because clinical trials are conducted under widely varying conditions, adverse reaction rates observed in the clinical trials of a drug cannot be directly compared to rates in the clinical trials of another drug and may not reflect the rates observed in practice.

The pooled safety population described in the WARNINGS AND PRECAUTIONS reflect exposure to adagrasib as a single agent at 600 mg orally twice daily in 366 patients with NSCLC and other solid tumors enrolled in KRYSTAL-1 and KRYSTAL-12 (NCT04685135). Among 366 patients who received adagrasib, 39% of patients were exposed for 6 months or longer and 12% were exposed for greater than one year. In this pooled safety population the most common ( $\geq 25\%$ ) adverse reactions were nausea (70%), diarrhea (69%), vomiting (57%), fatigue (55%), musculoskeletal pain (38%), hepatotoxicity (37%), renal impairment (33%), edema (30%), dyspnea (26%), and decreased appetite (29%). In this pooled safety population, the most common Grade 3 or 4 ( $\geq 2\%$ ) laboratory abnormalities were decreased lymphocytes (20%), decreased hemoglobin (7%), increased alanine aminotransferase (4.5%), increased aspartate aminotransferase (4.2%), hypokalemia (3.6%), hyponatremia (3.4%), increased lipase (2.5%), decreased leukocytes (2.5%), decreased neutrophils (2.3%), and increased alkaline phosphatase (2.0%).

## Non-Small Cell Lung Cancer

The safety of adagrasib was evaluated in patients with *KRAS* G12C-mutated, locally advanced or metastatic NSCLC in KRYSTAL-1 [see *Clinical Studies (14)*]. Patients received adagrasib 600 mg orally twice daily (n = 116). Among patients who received adagrasib, 45% were exposed for 6 months or longer and 4% were exposed for greater than one year.

The median age of patients who received adagrasib was 64 years (range 25 to 89), 56% female, 84% White, 8% Black or African American, and 4.3% Asian.

Serious adverse reactions occurred in 57% of patients who received adagrasib. Serious adverse reactions in  $\geq 2\%$  of patients were pneumonia (17%), dyspnea (9%), renal impairment (8%), sepsis (5%), hypoxia (4.3%), pleural effusion (4.3%), respiratory failure (4.3%), anemia (3.4%), cardiac failure (3.4%), hyponatremia (3.4%), hypotension (3.4%), muscular weakness (3.4%), pyrexia (3.4%), dehydration (2.6%), diarrhea (2.6%), mental status changes (2.6%), pulmonary embolism (2.6%), and pulmonary hemorrhage (2.6%). Fatal adverse reactions occurred in 11% of patients who received adagrasib due to pneumonia (3.4%), respiratory failure (1.7%), sudden death (1.7%), cardiac failure (0.9%), cerebrovascular accident (0.9%), mental status change (0.9%), pulmonary embolism (0.9%), and pulmonary hemorrhage (0.9%).

Permanent discontinuation of adagrasib due to an adverse reaction occurred in 13% of patients. Adverse reactions which resulted in permanent discontinuation of adagrasib occurring in two patients each (1.7%) were pneumonia and pneumonitis and occurring in one patient each (0.9%) were cerebrovascular accident, dyspnea, decreased ejection fraction, encephalitis, gastrointestinal obstruction, hemorrhage, hepatotoxicity, hypotension, muscular weakness, pulmonary embolism, pyrexia, respiratory failure and sepsis.

Dose interruptions of adagrasib due to an adverse reaction occurred in 77% of patients. Adverse reactions requiring dosage interruption in  $\geq 2\%$  of patients who received adagrasib included nausea, hepatotoxicity, fatigue, vomiting, pneumonia, renal impairment, diarrhea, QTc interval prolongation, anemia, dyspnea, increased lipase, decreased appetite, dizziness, hyponatremia, muscular weakness, increased amylase, pneumonitis, sepsis and decreased weight.

Dose reductions of adagrasib due to an adverse reaction occurred in 28% of patients. Adverse reactions which required dose reductions in  $\geq 2\%$  of patients who received adagrasib included hepatotoxicity, fatigue, nausea, diarrhea, vomiting, and renal impairment.

The most common adverse reactions ( $\geq 20\%$ ) were diarrhea, nausea, fatigue, vomiting, musculoskeletal pain, hepatotoxicity, renal impairment, dyspnea, edema, decreased appetite, cough, pneumonia, dizziness, constipation, abdominal pain, and QTc interval prolongation. The most common laboratory abnormalities ( $\geq 25\%$ ) were decreased lymphocytes, increased aspartate aminotransferase, decreased sodium, decreased hemoglobin, increased creatinine, decreased albumin, increased alanine aminotransferase, increased lipase, decreased platelets, decreased magnesium, and decreased potassium.

[Table 3](#) summarizes the adverse reactions in KRYSTAL-1.

**Table 3: Adverse Reactions (≥ 20%) in Patients with *KRAS* G12C-mutated NSCLC Who Received Adagrasib in KRYSTAL-1**

Adverse Reaction	Adagrasib N = 116	
	All Grades (%)	Grade 3 or 4 (%)
<b>Gastrointestinal Disorders</b>		
Diarrhea*	70	0.9
Nausea	69	4.3
Vomiting*	56	0.9
Constipation	22	0
Abdominal pain*	21	0
<b>General Disorders and Administration Site Conditions</b>		
Fatigue*	59	7
Edema*	32	0
<b>Musculoskeletal and Connective Tissue Disorders</b>		
Musculoskeletal pain*	41	7
<b>Hepatobiliary Disorders</b>		
Hepatotoxicity*, <sup>1</sup>	37	10
<b>Renal and Urinary Disorders</b>		
Renal impairment*, <sup>2</sup>	36	6
<b>Respiratory</b>		
Dyspnea*	35	10
Cough*	24	0.9
<b>Metabolism and Nutrition Disorders</b>		
Decreased appetite	30	4.3
<b>Infections and Infestations</b>		
Pneumonia*	24	17
<b>Nervous System Disorders</b>		
Dizziness*	23	0.9



Adverse Reaction	Adagrasib N = 116	
	All Grades (%)	Grade 3 or 4 (%)
<b>Cardiac Disorders</b>		
Electrocardiogram QT prolonged	20	6

\*Grouped term.

<sup>1</sup> Hepatotoxicity includes mixed liver injury, blood alkaline phosphatase increased, alanine aminotransferase increased, aspartate aminotransferase increased, liver function test increased, blood bilirubin increased, and bilirubin conjugated increased.

<sup>2</sup> Renal impairment includes acute kidney injury and increased blood creatinine.

Table 4 summarizes the laboratory abnormalities in KRYSTAL-1.

**Table 4: Select Laboratory Abnormalities Occurring ( $\geq 25\%$ ) That Worsened from Baseline in Patients with *KRAS* G12C-mutated NSCLC Who Received Adagrasib in KRYSTAL-1**

Laboratory Abnormality	Adagrasib*	
	All Grades (%)	Grade 3 or 4 (%)
<b>Hematology</b>		
Decreased lymphocytes	64	25
Decreased hemoglobin	51	8
Decreased platelets	27	0
<b>Chemistry</b>		
Increased aspartate aminotransferase	52	6
Decreased sodium	52	8
Increased creatinine	50	0
Decreased albumin	50	0.9
Increased alanine aminotransferase	46	5
Increased lipase	35	1.8
Decreased magnesium	26	0
Decreased potassium	26	3.5

\* Denominator used to calculate the rate varied from 106 to 113 based on the number of patients with a baseline value and at least one post-treatment value.

## 7 DRUG INTERACTIONS

### 7.1 Effects of Other Drugs on KRAZATI

#### Strong CYP3A4 Inducers

Avoid concomitant use of KRAZATI with strong CYP3A inducers.

Adagrasib is a CYP3A4 substrate. Concomitant use of KRAZATI with a strong CYP3A inducer reduces adagrasib exposure [see *Clinical Pharmacology (12.3)*], which may reduce the effectiveness of KRAZATI.

#### Strong CYP3A4 Inhibitors

Avoid concomitant use of KRAZATI with strong CYP3A inhibitors until adagrasib concentrations have reached steady state (after approximately 8 days).

Adagrasib is a CYP3A4 substrate. If adagrasib concentrations have not reached steady state, concomitant use of a strong CYP3A inhibitor will increase adagrasib concentrations, [see *Clinical Pharmacology (12.3)*], which may increase the risk of KRAZATI adverse reactions.

### 7.2 Effects of KRAZATI on Other Drugs

#### Sensitive CYP3A Substrates

Avoid concomitant use of KRAZATI with sensitive CYP3A substrates unless otherwise recommended in the Prescribing Information for these substrates.

Adagrasib is a CYP3A inhibitor. Concomitant use with KRAZATI increases exposure of CYP3A substrates [see *Clinical Pharmacology (12.3)*], which may increase the risk of adverse reactions related to these substrates.

#### Sensitive CYP2C9 Substrates

Avoid concomitant use of KRAZATI with sensitive CYP2C9 substrates where minimal concentration changes may lead to serious adverse reactions unless otherwise recommended in the Prescribing Information for these substrates.

Adagrasib is a CYP2C9 inhibitor. Concomitant use with KRAZATI increases exposure of CYP2C9 substrates [see *Clinical Pharmacology (12.3)*], which may increase the risk of adverse reactions related to these substrates.

#### Sensitive CYP2D6 Substrates

Avoid concomitant use of KRAZATI with sensitive CYP2D6 substrates where minimal concentration changes may lead to serious adverse reactions unless otherwise recommended in the Prescribing Information for these substrates.

Adagrasib is a CYP2D6 inhibitor. Concomitant use with KRAZATI increases exposure of CYP2D6 substrates [see *Clinical Pharmacology (12.3)*], which may increase the risk of adverse reactions related to these substrates.

### P-gp Substrates

Avoid concomitant use of KRAZATI with P-gp substrates where minimal concentration changes may lead to serious adverse reactions unless otherwise recommended in the Prescribing Information for these substrates.

Adagrasib is a P-gp inhibitor. Concomitant use with KRAZATI increases exposure of P-gp substrates [see *Clinical Pharmacology (12.3)*], which may increase the risk of adverse reactions related to these substrates.

## **7.3 Drugs That Prolong QTc Interval**

Avoid concomitant use of KRAZATI with other product(s) with a known potential to prolong the QTc interval. If concomitant use cannot be avoided, monitor electrocardiogram and electrolytes prior to starting KRAZATI, during concomitant use, and as clinically indicated [see *Warnings and Precautions (5.2)*]. Withhold KRAZATI if the QTc interval is > 500 ms or the change from baseline is > 60 ms [see *Dosage and Administration (2.3)*].

Adagrasib causes QTc interval prolongation [see *Clinical Pharmacology (12.2)*]. Concomitant use of KRAZATI with other products that prolong the QTc interval may result in a greater increase in the QTc interval and adverse reactions associated with QTc interval prolongation, including Torsade de pointes, other serious arrhythmias, and sudden death [see *Warnings and Precautions (5.2)*].

## **8 USE IN SPECIFIC POPULATIONS**

### **8.1 Pregnancy**

#### Risk Summary

There are no available data on the use of KRAZATI in pregnant women. In animal reproduction studies, oral administration of adagrasib to pregnant rats and rabbits during the period of organogenesis did not cause adverse development effects or embryo-fetal lethality at exposures below the human exposure at the recommended dose of 600 mg twice daily (*see Data*).

In the U.S. general population, the estimated background risk of major birth defects and miscarriage in clinically recognized pregnancies is 2% to 4% and 15% to 20%, respectively.

#### Data

##### *Animal Data*

In a rat embryo-fetal development study, once daily oral administration of adagrasib to pregnant rats during the period of organogenesis resulted in maternal toxicity (reduced body weight and food intake, and adverse clinical signs leading to moribund condition and early termination) and lower fetal body weight at 270 mg/kg dose level (approximately 2 times the recommended dose of 600 mg twice daily based on body surface area [BSA]). Adagrasib induced skeletal

malformations, such as bent limbs, and skeletal variations, such as bent scapula, wavy ribs, and supernumerary short cervical ribs at 270 mg/kg, which were secondary to maternal toxicity and reduced fetal body weight.

In a rabbit embryo-fetal development study, once daily oral administration of adagrasib during the period of organogenesis resulted in lower fetal body weight and increased litter frequency of unossified sternebra at 30 mg/kg (approximately 0.11 times the human exposure based on area under the curve [AUC] at the clinical dose of 600 mg twice daily). This skeletal variation was associated with maternal toxicities, including reduced mean body weight and decreased food consumption. Adagrasib exposure did not cause adverse developmental effects and did not affect embryo-fetal survival in rabbits at doses up to 30 mg/kg once daily.

## 8.2 Lactation

### Risk Summary

There are no data on the presence of adagrasib or its metabolites in human milk, the effects on the breastfed child, or on milk production. Because of the potential for serious adverse reactions in breastfed children, advise women not to breastfeed during treatment with KRAZATI and for 1 week after the last dose.

## 8.3 Females and Males of Reproductive Potential

### Infertility

Based on findings from animal studies, KRAZATI may impair fertility in females and males of reproductive potential [see *Nonclinical Toxicology (13.1)*].

## 8.4 Pediatric Use

The safety and effectiveness of KRAZATI has not been established in pediatric patients.

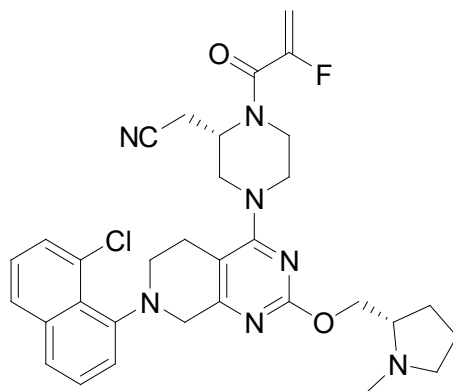
## 8.5 Geriatric Use

Of 116 patients who received adagrasib 600 mg orally twice daily in KRYSTAL-1, 49% (57 patients) were  $\geq 65$  years of age. No overall differences in safety or effectiveness were observed between older and younger patients.

# 11 DESCRIPTION

Adagrasib is an irreversible inhibitor of KRAS G12C and belongs to the RAS GTPase family. The molecular formula is  $C_{32}H_{35}ClFN_7O_2$  and the molecular weight is 604.1 g/mol. The

chemical name is {(2*S*)-4-[7-(8-chloronaphthalen-1-yl)-2-{{(2*S*)-1-methylpyrrolidin-2-yl}-methoxy}-5,6,7,8-tetrahydropyrido[3,4-*d*]pyrimidin-4-yl]-1-(2-fluoroprop-2-enoyl)piperazin-2-yl}acetonitrile. Adagrasib has the following chemical structure:



Adagrasib is a crystalline solid. The solubility of adagrasib in the aqueous media decreases over the range pH 1.2 to 7.4 from > 262 mg/mL to < 0.010 mg/mL.

KRAZATI (adagrasib) tablets for oral administration contain 200 mg of adagrasib. The following are inactive ingredients: colloidal silicon dioxide, crospovidone, magnesium stearate (vegetable sourced), mannitol, and microcrystalline cellulose. The tablet film coating contains hypromellose, maltodextrin, medium chain triglycerides (vegetable sourced), polydextrose, talc, and titanium dioxide.

## 12 CLINICAL PHARMACOLOGY

### 12.1 Mechanism of Action

Adagrasib is an irreversible inhibitor of KRAS G12C that covalently binds to the mutant cysteine in KRAS G12C and locks the mutant KRAS protein in its inactive state that prevents downstream signaling without affecting wild-type KRAS protein. Adagrasib inhibits tumor cell growth and viability in cells harboring *KRAS* G12C mutations and results in tumor regression in *KRAS* G12C-mutated tumor xenograft models with minimal off-target activity.

### 12.2 Pharmacodynamics

Adagrasib exposure-response relationships and the time course of pharmacodynamic response are unknown.

#### Cardiac Electrophysiology

Adagrasib increased QTc in a concentration-dependent manner. Based on the concentration-QTcF relationship, the mean (90% CI) QTcF change from baseline ( $\Delta$ QTcF) was 18 (15, 21) ms at the mean steady-state maximum concentration ( $C_{\max,ss}$ ) in patients after administration of adagrasib 600 mg twice daily [see *Warnings and Precautions* (5.2)].

### 12.3 Pharmacokinetics

The pharmacokinetics of adagrasib were studied in healthy subjects and in patients with *KRAS* G12C-mutated NSCLC and are presented as mean (percent coefficient of variation) unless otherwise specified.

Adagrasib AUC and  $C_{max}$  increase dose proportionally over the dose range of 400 mg to 600 mg (0.67 to 1 times the approved recommended dose). Adagrasib steady-state was reached within 8 days following administration of the approved recommended dosage and accumulation was approximately 6-fold.

#### Absorption

The median (min, max)  $T_{max}$  of adagrasib is approximately 6 (6, 12) hours.

#### *Effect of Food*

No clinically significant differences in the pharmacokinetics of adagrasib were observed following administration of a high-fat and high-calorie meal (containing approximately 900 to 1000 calories, 50% from fat).

#### Distribution

The apparent volume of distribution of adagrasib is 942 L (57%). Human plasma protein binding of adagrasib is approximately 98% in vitro.

#### Elimination

The adagrasib terminal elimination half-life is 23 hours (16%) and the apparent oral clearance (CL/F) is 37 L/h (54%) in patients.

#### *Metabolism*

Adagrasib is metabolized primarily by CYP3A4 following single dose administration. Adagrasib inhibits its own CYP3A4 metabolism following multiple dosing to steady-state which permits CYP2C8, CYP1A2, CYP2B6, CYP2C9, and CYP2D6 to contribute to its metabolism at steady-state.

#### *Excretion*

Following a single oral dose of radiolabeled adagrasib, approximately 75% of the dose was recovered in feces (14% as unchanged) and 4.5% recovered in urine (2% as unchanged).

#### Specific Populations

No clinically significant differences in the pharmacokinetics of adagrasib based on age (19 to 89 years), sex, race (White, Black or African American, or Asian), body weight (36 to 139 kg), ECOG PS (0, 1), or tumor burden. No clinically significant differences in the pharmacokinetics of adagrasib are expected in patients with mild to severe renal impairment (CL<sub>cr</sub> 15 to < 90 mL/min estimated by Cockcroft-Gault equation) or in patients with mild to severe hepatic impairment (Child-Pugh classes A to C).

## Drug Interaction Studies

### Clinical Studies and Model-Informed Approaches

The following table describes the effect of other drugs on the pharmacokinetics of adagrasib.

**Table 5: Effect of Other Drugs on Adagrasib**

Concomitant Drug	Adagrasib Dosage	Changes in C <sub>max</sub> or AUC of Adagrasib	
		C <sub>max</sub> % Decrease	AUC % Decrease
Rifampin (a strong CYP3A inducer)	600 mg single dose	88%	95%
	600 mg multiple doses	> 61% <sup>a</sup>	> 66% <sup>a</sup>

C<sub>max</sub> = maximum plasma concentration; AUC = area under the plasma concentration-time curve

<sup>a</sup> Predicted changes in C<sub>max</sub> or AUC of adagrasib

*Strong CYP3A Inhibitors:* Adagrasib C<sub>max</sub> increased by 2.4-fold and AUC increased by 4-fold following concomitant use of a single dose of 200 mg (0.33 times the approved recommended dose) with itraconazole (a strong CYP3A inhibitor). No clinically significant differences in the pharmacokinetics of adagrasib at steady state were predicted when used concomitantly with itraconazole.

No clinically significant differences in the pharmacokinetics of adagrasib were predicted or observed when used concomitantly with efavirenz (a moderate CYP3A inducer), pantoprazole (a proton pump inhibitor), or rosuvastatin (a BCRP/OATP substrate).

The following table describes the effect of adagrasib on the pharmacokinetics of other drugs.

**Table 6: Effect of Adagrasib on Other Drugs**

Concomitant Drug	Adagrasib Dosage	Fold Increase of Concomitant Drug	
		C <sub>max</sub>	AUC
Midazolam (a sensitive CYP3A substrate)	400 mg <sup>a</sup> twice daily	4.8-fold	21-fold
	600 mg twice daily	3.1-fold <sup>b</sup>	31-fold <sup>b</sup>

Concomitant Drug	Adagrasib Dosage	Fold Increase of Concomitant Drug	
		C <sub>max</sub>	AUC
Warfarin (a sensitive CYP2C9 substrate)	600 mg twice daily	1.1-fold <sup>b</sup>	2.9-fold <sup>b</sup>
Dextromethorphan (a sensitive CYP2D6 substrate)	400 mg <sup>a</sup> twice daily	1.9-fold	1.8-fold
	600 mg twice daily	1.7-fold <sup>b</sup>	2.4-fold <sup>b</sup>
Digoxin (a P-gp substrate)	600 mg twice daily	1.9-fold <sup>b</sup>	1.5-fold <sup>b</sup>

C<sub>max</sub> = maximum plasma concentration; AUC = area under the plasma concentration-time curve

<sup>a</sup> 0.66 times the approved recommended dosage

<sup>b</sup> Predicted changes in C<sub>max</sub> or AUC of concomitant drug

### *In Vitro Studies*

*Cytochrome P450 (CYP) Enzymes:* Adagrasib may inhibit CYP2B6.

*Transporter Systems:* Adagrasib may be a substrate of BCRP and may inhibit MATE-1/MATE-2K.

## 13 NONCLINICAL TOXICOLOGY

### 13.1 Carcinogenesis, Mutagenesis, Impairment of Fertility

Carcinogenicity studies have not been conducted with adagrasib.

Adagrasib was not mutagenic in an in vitro bacterial reverse mutation (Ames) assay and was not genotoxic in an in vitro chromosomal aberration assay or an in vivo micronucleus assay in rats.

Fertility studies were not conducted with adagrasib. In toxicology studies of up to 13-weeks in duration in rats, oral administration of adagrasib induced phospholipidosis which increased vacuolation in female reproductive organs, including vacuolation in ovaries (corpora lutea, macrophage or interstitial cells) and uterus (glandular epithelium), and atrophy with mucification of the vaginal mucosa at doses  $\geq$  150 mg/kg (approximately equal to or greater than the human exposure at the recommended dose based on area under the curve [AUC]). These findings reversed after cessation of dosing in the 28-day study but in the 13-week study, pigmented macrophage aggregates were observed in the ovaries of female rats after the recovery period. In a 28-day repeat-dose toxicology study, oral administration of adagrasib to male rats induced atrophy and epithelial vacuolation of the prostate gland and seminal vesicles at 300 mg/kg



(approximately 1.6 times the human exposure at the recommended dose based on AUC). These findings resolved after cessation of treatment.

### 13.2 Animal Toxicology and/or Pharmacology

Phospholipidosis (vacuolation and/or presence of foamy macrophages) was observed in multiple organs (e.g., lung, trachea, heart, skeletal, ovaries, uterus, adrenal gland, kidney, liver, lymph nodes, spleen, thymus, and thyroid in rats; and heart and lung in dogs) after repeated oral administration of adagrasib in rats and dogs. In toxicology studies of up to 13-week duration in rats, phospholipidosis was observed at doses  $\geq 150$  mg/kg (approximately  $\geq 2$  times the human exposure at the recommended dose based on AUC). In a dog 28-day toxicity study, this effect was observed at 25 mg/kg (approximately equal to the human exposure at the recommended dose based on AUC). The extent of vacuolization and the presence of foamy macrophages were more prominent in the rat compared to dogs, and evidence of reversibility after cessation of treatment was noted for most organs. The significance of this finding in humans is unknown.

## 14 CLINICAL STUDIES

The efficacy of adagrasib was evaluated in KRYSTAL-1 (NCT03785249), a multicenter, single-arm, open-label expansion cohort study. Eligible patients were required to have locally advanced or metastatic *KRAS* G12C-mutated NSCLC who previously received treatment with a platinum-based regimen and an immune checkpoint inhibitor, an Eastern Cooperative Oncology Group Performance Status (ECOG PS) of 0 or 1, and at least one measurable lesion as defined by Response Evaluation criteria in Solid Tumors (RECIST v1.1). Identification of a *KRAS* G12C mutation was prospectively determined by local testing using tissue specimens. Patients received adagrasib 600 mg orally twice daily until unacceptable toxicity or disease progression. Tumor assessments were performed every 6 weeks. The major efficacy outcome measures were confirmed objective response rate (ORR) and duration of response (DOR) as evaluated by blinded independent central review (BICR) according to RECIST v1.1.

In the efficacy population, *KRAS* G12C mutation status was determined by prospective local testing using tumor tissue specimens. Of the 112 patients with *KRAS* G12C mutation, tissue samples from 88% (98/112) patients were tested retrospectively using the QIAGEN *therascreen* *KRAS* RGQ PCR Kit. While 89% (87/98) of patients were positive for *KRAS* G12C mutation, 11% (11/98) did not have a *KRAS* G12C mutation identified. In addition, plasma samples from 63% (71/112) patients were tested retrospectively using Agilent Resolution ctDx FIRST assay. While 66% (47/71) of patients were positive for *KRAS* G12C mutation, 34% (24/71) did not have a *KRAS* G12C mutation identified.

A total of 112 patients had at least one measurable lesion at baseline as assessed by BICR according to RECIST v1.1.

The baseline demographic and disease characteristics in the efficacy population were: median age 64 years (range: 25 to 89), 55% female, 83% White, 8% were Black or African American,

4% Asian, 4% race not reported, 0.9% American Indian or Alaska Native, 16% Eastern Cooperative Oncology Group (ECOG) performance status (PS) 0 and 83% ECOG PS 1. Tumor histology was 97% adenocarcinoma and 89% of patients had metastatic disease. Patients received a median of 2 prior systemic therapies (range 1 to 7); 43% received 1 prior line, 35% received 2 prior lines, 10% received 3 prior lines and 12% received 4 or more prior lines, 98% received both prior platinum and prior anti-PD-1/PD-L1 therapy. Sites of extra-thoracic disease included bone 42%, brain 30%, adrenals 21%, and liver 21%.

Efficacy results are summarized in [Table 7](#).

**Table 7: Efficacy Results for KRYSTAL-1**

<b>Efficacy Parameter</b>	<b>Adagrasib (n = 112)</b>
<b>Objective Response Rate (95% CI)<sup>a</sup></b>	43 (34, 53)
Complete response rate, %	0.9
Partial response rate, %	42
<b>Duration of Response<sup>a</sup></b>	
Median <sup>b</sup> in months (95% CI)	8.5 (6.2, 13.8)
Patients with duration $\geq$ 6 months <sup>c</sup> , %	58

CI = Confidence Interval

<sup>a</sup> Assessed by BICR

<sup>b</sup> Estimate using Kaplan-Meier method

<sup>c</sup> Observed proportion of patients with duration of response beyond landmark time

## 16 HOW SUPPLIED/STORAGE AND HANDLING

### How Supplied

KRAZATI (adagrasib) tablets, 200 mg, oval shaped, white to off-white, immediate release, film coated tablets with “200” on one side and stylized “M” on the other side.

KRAZATI (adagrasib) tablets are packaged in high-density polyethylene, white opaque, square bottles with desiccant and polypropylene, white, child resistant closures with a tamper-proof heat induction seal.

NDC 80739-812-12: 200 mg, bottle containing 120 tablets.

NDC 80739-812-18: 200 mg, bottle containing 180 tablets.

### Storage and Handling

Store tablets at room temperature, 20°C to 25°C (68°F to 77°F). Temperature excursions between 15°C and 30°C (59°F to 86°F) are permitted [*see USP Controlled Room Temperature*].

## 17 PATIENT COUNSELING INFORMATION

Advise the patient to read the FDA-approved patient labeling (Patient Information).

### Gastrointestinal Adverse Reactions

Advise patients that KRAZATI can cause severe gastrointestinal adverse reactions and to contact their healthcare provider for signs or symptoms of severe or persistent gastrointestinal adverse reactions [see *Warnings and Precautions (5.1)*].

### QTc Interval Prolongation

Advise patients that KRAZATI can cause QTc interval prolongation and to contact their healthcare provider for signs or symptoms of arrhythmias [see *Warnings and Precautions (5.2)*].

### Hepatotoxicity

Advise patients that KRAZATI can cause hepatotoxicity and to immediately contact their healthcare provider for signs or symptoms of liver dysfunction [see *Warnings and Precautions (5.3)*].

### Interstitial Lung Disease (ILD)/Pneumonitis

Advise patients that KRAZATI can cause ILD / pneumonitis and to contact their healthcare provider immediately for new or worsening respiratory symptoms [see *Warnings and Precautions (5.4)*].

### Drug Interactions

Advise patients to inform their healthcare providers of all concomitant medications, including prescription medicines, over-the-counter drugs, vitamins, and herbal products [see *Drug Interactions (7.1)*].

### Missed Dose

If a dose of KRAZATI is missed by greater than 4 hours, resume dosing at the next scheduled time [see *Dosage and Administration (2.2)*].

### Lactation

Advise women not to breastfeed during treatment with KRAZATI and for 1 week after the last dose [see *Use in Specific Populations (8.2)*].

### Infertility

Inform patients that KRAZATI may cause infertility [see *Use in Specific Populations (8.3)*].



KRAZATI (adagrasib)

Manufactured for:  
Mirati Therapeutics, Inc.  
3545 Cray Court  
San Diego, CA 92121, U.S.A.

© 2022 Mirati Therapeutics, Inc. All Rights Reserved

**PATIENT INFORMATION**  
**KRAZATI™ (krah zah tee)**  
**(adagrasib)**  
**tablets**

**What is KRAZATI?**

KRAZATI is a prescription medicine used to treat adults with non-small cell lung cancer (NSCLC):

- that has spread to other parts of the body or cannot be removed by surgery, **and**
- whose tumor has an abnormal KRAS G12C gene, **and**
- who have received at least one prior treatment for their cancer.

Your healthcare provider will perform a test to make sure that KRAZATI is right for you.

It is not known if KRAZATI is safe and effective in children.

**Before taking KRAZATI, tell your healthcare provider about all of your medical conditions, including if you:**

- have any heart problems, including heart failure and congenital long QT syndrome.
- have liver problems.
- are pregnant or plan to become pregnant. It is not known if KRAZATI can harm your unborn baby.
- are breastfeeding or plan to breastfeed. It is not known if KRAZATI passes into your breastmilk. Do not breast feed during treatment and for 1 week after your last dose of KRAZATI.

**Tell your healthcare provider about all the medicines you take**, including prescription and over-the-counter medicines, vitamins, and herbal supplements. KRAZATI can affect the way other medicines work, and other medicines can affect how KRAZATI works.

**How should I take KRAZATI?**

- Take KRAZATI exactly as your healthcare provider tells you to take it. Do not change your dose or stop taking KRAZATI unless your healthcare provider tells you to.
- Your healthcare provider may change your dose, or temporarily or permanently stop treatment with KRAZATI if you develop certain side effects.
- Take your prescribed dose of KRAZATI 2 times each day, at about the same time each day.
- Take KRAZATI either with food or without food.
- Swallow KRAZATI tablets whole. Do not chew, crush or split tablets.
- If you vomit after taking a dose of KRAZATI, do not take an extra dose. Take your next dose at your next scheduled time.

If you miss a dose of KRAZATI, take the dose as soon as you remember. If it has been more than 4 hours, do not take the dose. Take your next dose of KRAZATI at your next scheduled time. Do not take 2 doses at the same time to make up for a missed dose.

**What are possible side effects of KRAZATI?**

**KRAZATI can cause serious side effects, including:**

- **Stomach and intestinal (gastrointestinal) problems.** Stomach and intestinal side effects including nausea, diarrhea, or vomiting, are common with KRAZATI but can also sometimes be severe. KRAZATI can also cause serious stomach and intestinal side effects such as bleeding, obstruction, inflammation of the colon (colitis), and narrowing (stenosis).
  - **Call your healthcare provider if you develop any of the signs or symptoms of stomach or intestinal problems listed above during treatment with KRAZATI.**
  - Your healthcare provider may prescribe an antidiarrheal medicine or anti-nausea medicine, or other treatment, as needed.
- **Changes in the electrical activity of your heart called QTc prolongation.** Certain changes can occur in the electrical activity of your heart during treatment with KRAZATI, and can be seen on a test called an electrocardiogram (ECG or EKG). QTc prolongation can increase your risk for irregular heartbeats that can be life-threatening, such as torsades de pointes, and can lead to sudden death.
  - You should not take KRAZATI if you have congenital long QT syndrome or if you currently have QTc prolongation. See **“Before taking KRAZATI, tell your healthcare provider about all of your medical conditions, including if you:”**
    - Your healthcare provider should monitor the electrical activity of your heart and the levels of body salts in your blood (electrolytes) during treatment with KRAZATI if you have heart failure, a slow heart rate, abnormal levels of electrolytes in your blood, or if you take a medicine that can prolong the QT interval of your heartbeat.

- **Tell your healthcare provider if you feel dizzy, lightheaded, or faint, or if you get abnormal heartbeats during treatment with KRAZATI.**

- **Liver problems.** Abnormal liver blood test results are common with KRAZATI and can sometimes be severe. Your healthcare provider should do blood tests before starting and during treatment with KRAZATI to check your liver function. Tell your healthcare provider right away if you develop any signs or symptoms of liver problems, including:
  - your skin or the white part of your eyes turns yellow (jaundice)
  - dark or “tea-colored” urine
  - light-colored stools (bowel movements)
  - tiredness or weakness
  - nausea or vomiting
  - bleeding or bruising
  - loss of appetite
  - pain, aching or tenderness on the right side of your stomach area (abdomen)
- **Lung or breathing problems.** KRAZATI may cause inflammation of the lungs that can lead to death. Tell your healthcare provider or get emergency medical help right away if you have new or worsening shortness of breath, cough, or fever.

The most common side effects of KRAZATI include:

- nausea
- diarrhea
- vomiting
- tiredness
- muscle and bone pain
- kidney problems
- swelling
- breathing trouble
- decreased appetite

Certain abnormal laboratory test results are common with KRAZATI. Your healthcare provider will monitor you for abnormal laboratory tests, and treat you if needed.

KRAZATI may cause fertility problems in males and females, which may affect your ability to have children. Talk to your healthcare provider if this is a concern for you.

These are not all of the possible side effects of KRAZATI.

Call your doctor for medical advice about side effects. You may report side effects to FDA at 1-800-FDA-1088.

#### **How should I store KRAZATI?**

- Store KRAZATI at room temperature between 68°F to 77°F (20°C to 25°C ).
- KRAZATI comes in a child-resistant container.
- KRAZATI comes with a desiccant (drying agent) in the container to keep the medicine dry. Do not remove the desiccant from the container after opening. Do not eat or swallow the desiccant.

**Keep KRAZATI and all medicines out of the reach of children.**

#### **General information about the safe and effective use of KRAZATI.**

Medicines are sometimes prescribed for purposes other than those listed in a Patient Information leaflet. Do not use KRAZATI for a condition for which it was not prescribed. Do not give KRAZATI to other people, even if they have the same symptoms that you have. It may harm them. You can ask your pharmacist or healthcare provider for information about KRAZATI that is written for health professionals.

#### **What are the ingredients in KRAZATI?**

**Active ingredient:** adagrasib

**Inactive ingredients:** colloidal silicon dioxide, crospovidone, magnesium stearate (vegetable sourced), mannitol, and microcrystalline cellulose. The tablet film coating contains hypromellose, maltodextrin, medium chain triglycerides (vegetable sourced), polydextrose, talc, and titanium dioxide.

Manufactured for: Mirati Therapeutics, Inc. 3545 Cray Court San Diego, CA 92121, U.S.A.

© 2022 Mirati Therapeutics, Inc. All rights reserved

For more information, go to [www.KRAZATI.com](http://www.KRAZATI.com) or call 1-844-MIRATI-1 (1-844-647-2841)

This Patient Information has been approved by the U.S. Food and Drug Administration.

Issued: 12/2022

-----  
**This is a representation of an electronic record that was signed electronically. Following this are manifestations of any and all electronic signatures for this electronic record.**  
-----

/s/  
-----

RICHARD PAZDUR  
12/15/2022 04:06:12 PM